

INVIVO SENTINELLE BREAST COIL

# IT ALL STARTS WITH BETTER IMAGES



Dunlee's lineup of **Invivo Sentinelle Breast Coils** deliver outstanding images utilizing parallel imaging techniques. The proprietary Variable Coil Geometry features independently adjustable coil elements for optimizing the signal-to-noise ratio for a patient's left and right breasts. This allows users to personalize each exam for each patient to generate highly detailed, high quality images with homogeneous signal independent of breast size. Furthermore, the adjustable elements are effective in immobilizing the breast, helping to reduce motion artifacts.

## KEY BENEFITS

- Variable Coil Geometry to adjust fit of coil elements to each individual patient
- Ergonomic design that allows open access for breast positioning and patient comfort
- High signal-to-noise ratios to take advantage of advanced imaging applications (parallel imaging, spectroscopy, diffusion weighted imaging)

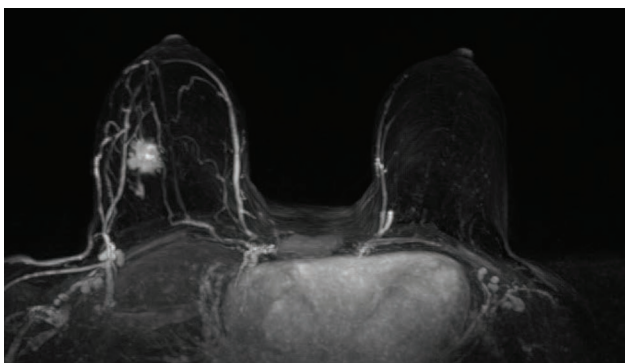
DUNLEE

# HIGH QUALITY IMAGING BASED ON OUR INNOVATIVE COIL ARCHITECTURE



## Open Access

The open aperture design enables technologists to position the breast tissue for appropriate coverage of the breast. Access to all four quadrants of the breast including posterior access to the chest wall and axilla are available for imaging and intervention. No matter where the lesion is located, the open patient support affords the freedom to move and the space to work.



## Patient Comfort

A comprehensive padding assortment and the ergonomic design of the patient support are targeted to alleviate pressure points. The included shoulder bridge padding allows for imaging with the patient's arms at their side lessening sternal pressure. The 8-way adjustable headrest adapts to a variety of patient configurations to aid in optimizing patient comfort and also features a mirrored lens allowing for outward visibility.

## You've Got Options

The optional Sentinelle Accessory Cart is a great way to store your coil and associated padding when not in use. When it comes time to use the coil again, the cart provides an easy way to transfer the coil onto the MR gantry. Furthermore, the detachable cart shelving base provides a surface for setting up biopsy related equipment and accessories. The laminate construction provides nearly a lifetime of durability, allows for easy cleanup, and is designed for use in up to 3T environments.



All rights are reserved. Reproduction in whole or in part is prohibited without the prior written consent of the copyright holder.

Dunlee reserves the right to make changes in specification and/or to discontinue any product at anytime without notice or obligation and will not be liable for any consequences resulting from the use of this publication.

Dunlee is a brand of the Philips Company Group

**Contact us for further information.**

**Philips Medical Systems DMC GmbH**

Tel.: +49 40 5078-1391 • Fax: +49 40 5078-1611  
Röntgenstrasse 24 • 22335 Hamburg • Germany

**dunlee.com**